



THE RHINO DOOR

With a wide choice of flush and glazed in door slabs, the Decalu88 Entrance Door is defined by contemporary sightlines and sophisticated styling.

With a unique Bi-metal Polyamide design which delivers exceptional through-life performance with a maximum bowing tolerance of only 2.5mm under heat stress.

This means it won't bow or stick, regardless of the temperature outside, removing limitations on door design, including the specification of dark colours on south facing elevations.

Our entrance doors bring many benefits including aesthetics, security, functionality, and performance. Engineered to the highest industry standards, Rhino Aluminium offer a wide array of design options; from the sleek and subtle, to superior and grand contemporary designs.

THE BASIC PRINCIPLES OF THE RHINO DOOR

- Invisible drainage
- Integrated gaskets
- Knock in glazing bead for easy and fast installation
- Minimal rebate joint
- Production time halved
- No central gasket

DESIGN FEATURES

- Ultra-secure non beaded, structurally bonded panel
- 56mm panel depth
- Toughened safety glass - 48mm triple glazed
- Argon gas
- Stirling stainless bar handles
- Winkhaus AV3 autolocking with key operation
- Yale anti-bump key cylinder with internal thumb turn option
- Hahn Rollenband AT 2-part security hinge system and hinge horns
- Thermally broken aluminium profile system throughout
- Grooved and Tailed finish options



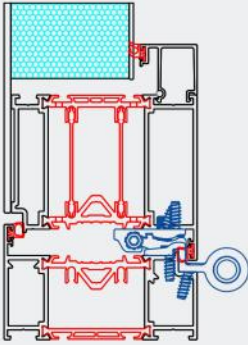
Secured by Design



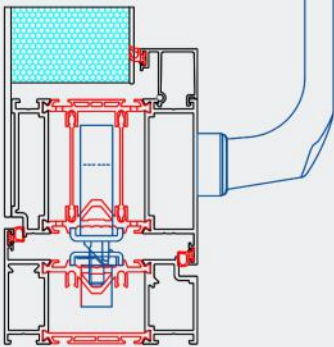
Official Police Security Initiative

CAD CROSS OPTIONS

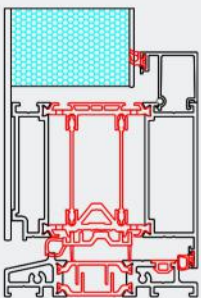
HINGE DETAIL



LOCK JAMB DETAIL



THRESHOLD DETAIL

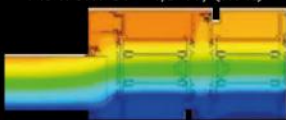


(Thermal breaks shown in red)



THERMAL PROFILE

As from $U_f = 1,3 \text{ W}/(\text{m}^2\text{k})$



°C
0 1 2 3 4 5 6 7 8 9 10 11 12 13 14 15 16 17 18 19 20

TECHNICAL SPECIFICATIONS

The Rhino Entrance Door is a modern and contemporary take on the average front door. With our unique thermal break design, high levels of thermal and acoustic insulation and a low threshold option to comply with Part M regulations, this will overall improve thermal performance and will satisfy most architectural requirements. Dimension options up to 1200mm in width and 2400mm in height, and a full range of customisable hardware available.

FEATURES AND OPTIONS

- Slim outer frame
- Flush finished frame
- Automatic Multi-Point Locking
- Width option up to 1200mm and height up to 2400mm
- Key operation locking system
- AV3 autoLock mechanical operation
- Low threshold option
- 9 contemporary styles and designs
- Various textured finish colour options
- eKey entry available
- Stainless steel hardware
- Detail finishes
- Range of configurations

SPECIFICATIONS

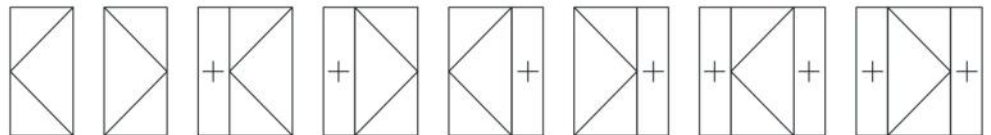
| Performance and accreditation | |
|-------------------------------|---|
| Uw-Value (Triple Glazing) | 1.0W/m ² k - Part L & Future Homes ready |
| Air Permeability | NBN EN 12207 (Class 4) |
| Water Tightness | NBN EN12208 (450 Pa) |
| Wind resistance | NBN EN12210 (Class C4) |
| Security | Kitemarked PAS24 |

| Size limits | |
|--------------------|-----------------------|
| Max sash weight | 150kg |
| Max sash dimension | 1200mm (w) 2400mm (h) |

| System features | |
|---------------------|-------------|
| Dual colour option | ✓ |
| Multi-point locking | ✓ |
| Glazing options | 46mm / 52mm |

CONFIGURATIONS

The diagrams shown here illustrate some of the configurations achievable with the Rhino door.



KEY

- ① Fixed Panel
- ② Hinged Right
- ③ Hinged Left

