

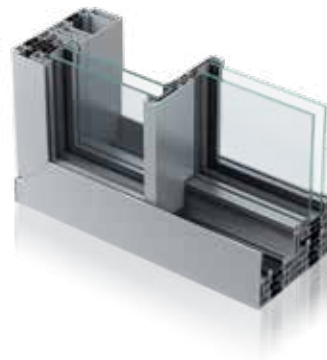


## INFINIUM Sliding Door System

Ideally suited to high-end designs, the Infinium Sliding Door offers you the opportunity to flood spaces with natural light thanks to its unique completely concealed outer frame, and large glazing panels with exceptionally slim sightlines.

The fully concealed system seamlessly integrates floor-to-ceiling glazing and features a slim interlock of just 21mm. This results in uninterrupted panoramic landscapes that cleverly brings together indoor and outdoor living to create a single-minded space.

The Infinium is available in a range of configurations, including a floating corner option, enabling you to deliver the most appropriate design solution for each project. Bespoke aluminium rollers have also been designed to ensure even the heaviest Infinium door is easy to open and close. Further architectural standout is provided by the system's highly discrete integrated handles.



### DESIGN FEATURES

- Fully concealed outer frame
- 21mm central interlock
- One or more opening panels with large width dimensions up to 3000mm, and height dimensions up to 3500mm
- Holds up to 400kg panel weight

### OPTIONS

- Available in double or triple track
- Glazing options of 38mm–52mm
- Floating corner post option for larger opening space
- Available in single colour polyester powder coating, textured and anodised finishes
- Available in a range of configurations
- Double or triple glazing solutions available on the same outer frame
- Manual or concealed motorised opening options

**AluK (GB) Limited**  
Newhouse Farm Ind Est  
Chepstow  
NP16 6UD  
+44 (0)1291 639 739

**AluK Design Studio**  
5-11 Worship Street  
London EC2A 2BH  
[aluk.co.uk](http://aluk.co.uk)

Experts in Aluminium

**ALUK**<sup>®</sup>

## SPECIFICATIONS

### PERFORMANCE AND ACCREDITATIONS

U-Value (Double Glazing)	1.3 W/m <sup>2</sup> K
U-Value (Triple Glazing)	< 1.0 W/m <sup>2</sup> K
Air Permeability	Class 4 (600 Pa)
Water Tightness	Class 8A (450 Pa)
Wind Resistance	Class C3 (1200 Pa up to 160 km/h)
Cycle Testing	25,000

### SYSTEM DEPTH

Duo Rail	175mm
Tri Rail	267mm

### CONFIGURATIONS

Opening	Inline Sliding
Dual Rail	✓
Tri Rail	✓

### SIZE AND WEIGHT LIMITS

Max Sash Height	3500mm
Max Sash Width	3000mm
Max Sash Weight	400kg

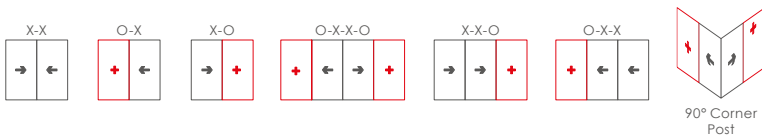
### GLAZING

Glazing Thickness	38mm-52mm
-------------------	-----------

### SYSTEM FEATURES

Single Colour	✓
Textured Finish	✓
Anodised Finish	✓
Multi-Point Locking	✓
Sightlines - Interlock	21mm

## CONFIGURATIONS



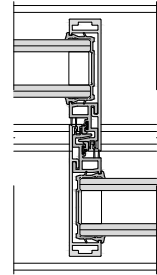
## KEY



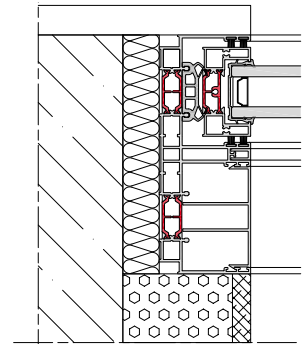
## CAD CROSS SECTIONS AND THERMAL PROFILE

Additional details are available on request.

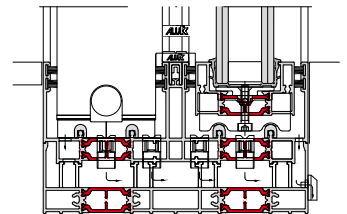
Infinium Interlock



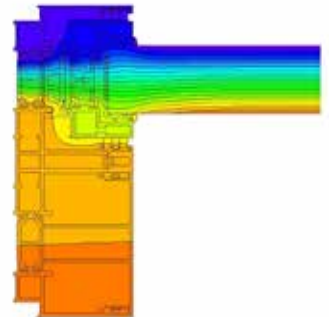
Infinium Jamb Detail



Infinium Cill Detail



Infinium Thermal Profile



Infinium Thermal Interlock

